

MEADOW BROOK THEATRE

A Professional Theatre on the Campus of Oakland University

THE EXTENDED STAY HOTELS PRESENT



KEN LUDWIG'S MORIARTY

A New Sherlock Holmes Adventure

By Ken Ludwig

October 4 - October 29, 2023



Meet Noah

- *Musical Theatre BFA '22*
- *2021 winner of the "NextGen National: Finding the Voices of Tomorrow" competition*

NOAH CANALES comes prepared and adapts to challenges. OU provided opportunities that taught Noah professionalism, prepared him to face challenges and pushed him to compete and achieve, even winning a prestigious national vocal competition. After graduation, he signed with a New York agency, putting him on a path to a dream career on Broadway.

Blaze your trail at **OAKLAND UNIVERSITY.**

oakland.edu



Welcome to Meadow Brook Theatre

Michigan's Answer to Broadway - 57th Anniversary Season

A Message From the Directors

Cheryl L. Marshall & Travis W. Walter



FALL REFRESH

As the air grows cooler and the days grow shorter, we invite you to join us in embracing the magic of theatre once again!

At Meadow Brook Theatre, we believe that live performance has the power to transport, inspire, and engage. It is a place where stories come alive and connections are formed between artist and audience.

Whether you're a fan of mysteries that keep you on the edge of your seat, comedies that make you laugh out loud, or toe-tapping musicals that leave you humming for days - our diverse lineup has something for everyone.

As we start afresh this fall season, we want to express our sincere gratitude for your continued support. Your presence in our theatre not only sustains us as artists but also contributes to our vibrant community.

So join us at Meadow Brook Theatre as we celebrate the power of storytelling. We are thrilled to welcome you back into our theater seats as we embark on this exciting new chapter.

As always, thank you to Oakland University. We are extremely proud to call this campus our home!

Enjoy the show!

Cheryl L. Marshall

Managing Director

Travis W. Walter

Artistic Director

HOUSE RULES

To allow others around you to enjoy the play, we remind you to please turn off your cell phones. The use of video and/or photography is strictly prohibited. Violations may be punishable by ejection and may render the offender liable for monetary damages.

Children under the age of 5 years old are not allowed into the theatre during performances.

After the show, we invite you to take a moment to share your experience with us through Facebook, Twitter, & Instagram.

Share your review of *Ken Ludwig's Moriarty* using

#MBTMoriarty or **#MBTheatre**

KEN LUDWIG'S MORIARTY

A New Sherlock Holmes Adventure

By Ken Ludwig

STEPHEN BLACKWELL* JENNIFER BYRNE* PHIL POWERS*
CHERYL TURSKI* RON WILLIAMS*

Managing Director
CHERYL L. MARSHALL

Artistic Director
TRAVIS W. WALTER

Director
TRAVIS W. WALTER

Fight Choreographer
ANTHONY GUEST

Scenic Design
JEN PRICE FICK

Costume Design
LIZ GOODALL

Lighting Design
BRIAN DEBS

Sound Design
MIKE DUNCAN

Fight Captain
JENNIFER BYRNE*

Stage Manager
BRITTANIE NICHOLE SICKER*

*Members of Actors' Equity Association, the union of Professional Actors and Stage Managers in the United States

"KEN LUDWIG'S MORIARTY" is presented by arrangement with Concord Theatricals on behalf of Samuel French, Inc. www.concordtheatricals.com

Originionally Produced by CLEVELAND PLAY HOUSE
Guest Artistic & Managing Director, Mark Cuddy

UNION AFFILIATIONS:

This theatre operates under an agreement between the League of Resident Theatres and Actors' Equity Association, the Union of Professional Actors and Stage Managers in the United States. The theatre operates under the agreement with the International Alliance of Theatre Stage employees, Local 38



**Members of Actors' Equity Association, the union of Professional Actors and Stage Managers in the United States*



Meadow Brook Theatre is a Constituent of Theatre Communications Group (TCG), the national organization for the nonprofit professional theatre, The Auburn Hills Chamber of Commerce, Culture Source, Rochester Chamber of Commerce, Michigan Business & Professional Association, and an original founding member of League of Resident Theatres (LORT), an organization comprised of theatre companies throughout the nation.

THE VIDEOTAPING OR MAKING OF ELECTRONIC OR OTHER AUDIO AND/OR VISUAL RECORDINGS OF THIS PRODUCTION AND DISTRIBUTING RECORDINGS OR STREAMS IN ANY MEDIUM, INCLUDING THE INTERNET, IS STRICTLY PROHIBITED, A VIOLATION OF THE AUTHOR(S)'S RIGHTS AND ACTIONABLE UNDER UNITED STATES COPYRIGHT LAW.

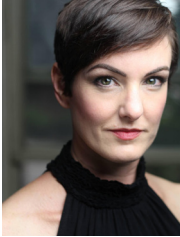
FOR MORE INFORMATION, PLEASE VISIT:

<https://concordtheatricals.com/resources/protecting-artists>

THE CAST



Stephen Blackwell



Jennifer Byrne



Phil Powers



Cheryl Turski



Ron Williams

Moriarty / Von Ormstein / Mycroft Holmes / Ensemble.....STEPHEN BLACKWELL
 Irene Adler / Mrs. Hudson / Cartwright.....JENNIFER BYRNE
 Dr. Watson.....PHIL POWERS
 Daisy / Mrs. Barabas / Hilda Klebb / Ensemble.....CHERYL TURSKI
 Sherlock Holmes.....RON WILLIAMS

Understudies never substitute for listed players unless a specific announcement for the appearance is made at the time of the performance.

Sherlock / Moriarty / Ensemble.....MICHAEL DANAJ
 Dr. Watson / Moriarty / Ensemble.....JACOB LIPSKI
 Irene / Daisy / Ensemble.....RAEGAN CANTRELLE

TIME & PLACE

London, Cambridgeshire and Europe
 Circa 1891

~~ There will be one fifteen minute intermission ~~

INSIDE THE THEATRE:

Special Seating

is available for wheelchairs. To make arrangements, please call the box office at 248.377.3300

Listening Devices

are available if needed. For information call 248.377.3300

Lost Items

should be reported to the House Manager or by calling the Box Office at 248.377.3300

PLEASE DON'T SMOKE

Smoking is prohibited on all Oakland University owned or operated campuses, grounds and buildings.



DIRECTOR'S NOTE

If you know me, you know that I love to laugh. I love comedy in all its forms whether it be slapstick, farcical, highbrow, or dark. I also love classic mysteries. I always try to figure out who-dun-it before the titular detective can solve the case. What Ken Ludwig does in his latest play, *Ken Ludwig's Moriarty, A New Sherlock Holmes Adventure*, is to perfectly marry the mystery with the comedy. There are moments that are completely silly and others that are extremely tense.

Meadow Brook Theatre audiences have proven that they enjoy Mr. Ludwig's writing. MBT has produced six Ken Ludwig comedies in our 57-year history and *Moriarty* marks the fifth that I have directed. We owe this production to Cheryl L. Marshall, MBT's managing director, who worked so hard to secure the rights for the show even before it had been published, working with Ken's agent and the licensing company, even before it premiered last May in Cleveland, Ohio. I would like to dedicate this production to her in appreciation of her hard work and dedication that she always gives to ensure that MBT continues to be "Michigan's Answer to Broadway."

Working with the cast and crew of this production to create the world of Sherlock Holmes has been an immense pleasure. So much imagination, creativity, and collaboration went into what you will see on stage. I hope that you enjoy the show and tell your friends about the wonderful work being done at the theatre. You are our greatest ambassador!

How many Ken Ludwig shows have you seen at MBT?

Ken Ludwig's Moriarty, A New Sherlock Holmes Adventure - 2023

Agatha Christie's Murder on the Orient Express - 2019

A Fox on the Fairway - 2019

Baskerville: A Sherlock Holmes Mystery - 2016

The Game's Afoot or Holmes for the Holidays - 2013

Lend Me a Tenor - 1995

Thank you for coming to live theatre!

Travis W. Walter
~Director

AFFORDABLE RENTAL COMMUNITIES FOR SENIORS

“Where you’re the star of the show!”



CSI Support & Development

Belleville

Carleton

Center Line

Clawson—NEW!

Dearborn

Heights

Detroit

Ecorse

Ferndale

Flat Rock

Hazel Park

Highland Park

Resident-members benefit from:

- *Senior empowerment*
- *Continuing education*
- *Diversity & open membership*
- *Democratic control*
- *Social interaction*
- *Not-for-profit operation*

Kalamazoo

Madison

Heights

Plymouth

Pontiac

Riverview

Romulus

Royal Oak

Southgate

Trenton

Warren

Wyandotte



www.csi.coop

For more information call 800-593-3052

TDD: 800-348-7011



A limited number of apartments are available in some locations for younger persons who are physically disabled and need the special features of a unit designed for the mobility impaired. Income limits apply. Most utilities are included.



WHO'S WHO

STEPHEN BLACKWELL (*Moriarty / Von Ormstein / Mycroft Holmes / Ensemble*) Is Stephen ecstatic to be in Moriarty? 100 Emoji. Stephen earned his Bachelor's at Wayne State University and his Master's at the University of Florida. Past roles at Meadow Brook include Bob Cratchit in *A Christmas Carol*, Ratchett/Arbuthnot in *Murder on the Orient Express* and most recently, Garry in *Noises Off* (for which he won Favorite Performance in a Comedy-Male at the 12th Annual Andes Awards!). Thanks to Britt, Cheryl and Travis for their continued support and trust...and as ever, ♥ to the lovely Annabelle.

JENNIFER BYRNE (*Irene Adler / Mrs. Hudson / Cartwright / Fight Captain*) Jennifer is thrilled to be returning to MBT after performing the role of Belinda Blair in *Noises Off*. Favorite roles include: *Summer: The Donna Summer Musical* (FNT), *Nevermore* (OOB Cast), *Evil Dead The Musical* (OOB cast/recording), *It's Karate, Kid The Musical!* (NYIT Nomination, OC recording), *Clue, On Stage* (MBT, Andes Award), *Musical of Musicals The Musical* (freeFall, TTB Award), *Shear Madness* (FRT), *Noises Off* (MBT). TV: "The Marvelous Mrs. Maisel", "Inventing Anna". For Tim & Awesome. [@jenbyrne726](http://www.jennifer-byrne.com)

PHIL POWERS (*Dr. Watson*) Phil is humbled to be returning to MBT for another crack at Dr. Watson with a truly loved cast and company. He last appeared in *Noises Off* as Selsdon, the often-drunk burglar. He dedicates this production to his families, both personal and professional. Thanks for coming!

CHERYL TURSKI (*Daisy / Mrs. Barabas / Hilda Klebb / Ensemble*) Cheryl is tickled pink to be back at MBT! Some of her previous MBT credits include, *Noises Off*, *Ladies in Lavender*, *Murder on the Orient Express*, *Baskerville: A Sherlock Holmes Mystery*, and *The Game's Afoot* among others. She recently assistant directed the national tour of *Paw Patrol Live: Heroes Unite* and currently teaches theatre at Wayne State University.

RON WILLIAMS (*Sherlock Holmes*) MBT credits include: *Noises Off*, *Fancy, a Country Jukebox Musical*, *ATOMIC*, *Tenderly*; *The Rosemary Clooney Musical*, *Baskerville: A Sherlock Holmes Mystery*, *Working : A Musical*. NYC, National/European credits include: *The Rocky Horror Show*, *Grease!*, *A Bronx Tale* starring Chazz Palmintieri. This performance is dedicated to Debbie and Daphne. You are the loves of my life. Cure Type 1 Diabetes! JDRF.com (<http://jdrf.com/>)

TRAVIS W. WALTER (*Director*) is an alumnus of Oakland University and has been an employee at Meadow Brook Theatre since graduating in 2002. In May of 2010, Travis was named Artistic Director after previously holding the title of Interim Artistic Director during the 2009-2010 Season. Travis continues to enthrall audiences by bringing Michigan, North American, and world premieres to life on Meadow Brook Theatre's stage. In 2013, he was named one of Oakland County Executive L. Brooks Patterson's Elite 40 Under 40; professionals from various business, government and non-profit sectors charged with giving recommendations to improve quality of life in Oakland County. Travis has won numerous awards for his directing at MBT and has directed over 70 productions at the theatre. Travis was the youngest person to be appointed as Artistic Director of MBT and has currently held the position the second longest.

ANTHONY GUEST (*Fight Choreographer*) is grateful to be working with such a regionally famous ensemble! Previous MBT credits: *Falling* (fight choreography); Acting: *Haunting of Hill House*, *You Never Know*, *Legends*, *Noises Off*, and *A Christmas Carol*. Tony currently serves as Associate Professor of Theatre at Oakland University. Huge thanks to Travis and Cheryl for including him in the MBT family!

**Support MBT
Buy a Raffle Ticket**

WHO'S WHO

BRITTANIE NICHOLE SICKER (*Stage Manager*) Britt is excited to join the company at MBT after over a decade on the road. Career highlights include tours of *Jersey Boys*, *Kinky Boots*, *Rock of Ages*, *Legally Blonde*, *Million Dollar Quartet*, *Priscilla Queen of the Desert*, *Burn the Floor*, *Choir of Man*, *Cirque Le Masque*, *Marilyn: Forever Blonde* and *Patti LuPone in Concert: Don't Monkey with Broadway*. Britt has been lucky enough to work and travel in 40 US states, 62 countries and 6 continents.

JEN PRICE FICK (*Scenic Design*) Selected credits - *Ladies in Lavender*, *The IT Girl*, *Stick Fly*, *Snow Geese*, *The All Night Strut* (Meadow Brook Theatre); *Sprout House* (Art Director, Universal Kids); *Maya and Marty* (Associate Art Director, NBC); *Singing Beach*, *Mourning Sun*; (Theatre 167, NYC); *Heartland* (Luna Stage, NJ); *Bunnica*, *I and You* (Mile Square Theatre, NJ) Associate design: *Angels in America* (Broadway); *Love Never Dies* (National Tour); *Alice By Heart* (MCC Theatre)

LIZ GOODALL (*Costume Design*) Liz is happy to be designing again for Meadow Brook Theatre, where she has been the costume shop manager for over a decade. Past designs for MBT include *Baskerville: A Sherlock Holmes Mystery*, *Mary Stuart*, and many others. Special thanks to her father for sharing his love of all literature, especially Doyle's *Sherlock*.

BRIAN DEBS (*Lighting Design*) This is Brian's second design for Meadow Brook. His previous work in New Orleans includes designs for Lux et Umbra Theater Company, Promethean Theater Company, and Melange Dance Company. He would especially like to thank his most indefatigable supporter, Colleen, and his noisiest supporter, Rosie.

MIKE DUNCAN (*Sound Design*) is excited to be back for another season at Meadow Brook Theatre. As Resident Sound Designer, Mike has designed and run sound for every production since 2005 (unless picking up an instrument for the occasional musical). Past favorites include *On Golden Pond*, *The 39 Steps*, and *The Spitfire Grill*.

CHERYL L. MARSHALL (*Managing Director*) has been working at MBT over the past 37 years. She became managing director in 2007 and since that time has been instrumental in the growth of MBT and its awareness in the national theatre conversation. She is proud of the work her "Theatre family" produces season after season and even more thrilled to see you, our patrons, at every play. She would like to thank Larry and the 3 Js and her 4 adorable grandchildren for their constant love and support.



MEADOW BROOK THEATRE
EST. 1966
Michigan's Answer to Broadway

Become a
RENT ANGEL

248-370-3316

Or email:
GroupSales.MBT@gmail.com
for more info today!



THE NIGHT SHIFT
FANCY
A CHRISTMAS CAROL
DEAR PUSS

Advertise your business
to more than 70,000
theatre-goers this season!

For more information:

(248) 370-3317

Communications.MBT@gmail.com



MEADOW BROOK THEATRE
LITTLE SHOP OF HORRORS
TARTAN

WHO'S WHO

KEN LUDWIG (*Playwright*) Ken Ludwig has had six shows on Broadway, seven in London's West End, and many of his works have become a standard part of the American repertoire. His 32 plays and musicals have been performed in over 30 countries in more than 20 languages and are produced throughout the United States every night of the year. *Lend Me a Tenor* won two Tony Awards and was called "one of the classic comedies of the 20th century" by The Washington Post. *Crazy For You* was on Broadway for 5 years and won the Tony and Olivier Awards for Best Musical. In addition, he has won the Edgar Award for Best Mystery of the Year, two Laurence Olivier Awards, two Helen Hayes Awards, and the Edwin Forrest Award for Contributions to the American Theater. His plays have starred, among others, Alec Baldwin, Carol Burnett, Tony Shaloub, Joan Collins and Hal Holbrook. His stage version of *Murder on the Orient Express* was written expressly at the request of the Agatha Christie Estate, and had its European premiere at the Chichester Festival Theatre in June of 2022. His play, *Dear Jack, Dear Louise*, won the 2020 Charles MacArthur Award for Best New Play of the Year. His newest plays include *Lend Me A Soprano*, which premiered at the Alley Theatre in fall 2022; *Moriarty*, opened at Cleveland Playhouse in spring 2023; *Pride and Prejudice, Part 2: Napoleon at Pemberley*; *Lady Molly of Scotland Yard*; and *221B: Holmes and Watson, Criminals at Large*. His book *How To Teach Your Children Shakespeare*, published by Penguin Random House, won the Falstaff Award for Best Shakespeare Book of the Year, and his essays are published in the Yale Review. He is a graduate of Harvard and Cambridge and is a frequent guest speaker for groups as varied as The Oxford-Cambridge Society, The Jane Austen Society of North America, The Folger Shakespeare Library, and The Baker Street Irregulars. His plays include commissions from the Agatha Christie Estate, the Royal Shakespeare Company, The Old Globe Theatre, and the Bristol Old Vic. For more information visit www.kenludwig.com.



DID YOU KNOW TICKET SALES COVER LESS THAN 70% OF MEADOW BROOK THEATRE'S TOTAL BUDGET?

Meadow Brook Theatre is a non-profit organization dedicated to bringing Broadway quality theatre to our community. We rely on the financial support of others, to enable a broad range of audiences to experience live theatre.



There are so many ways to help support! Scan the QR Code below to learn more.



www.MBTheatre.com/Donate

INSTALLED *to perfection*



KITCHENS • BATHS • WINDOWS • DOORS
TRIM & LUMBER • DECKS

Full-Service Home Center and Lumberyard.
Expert Design and Installation Services. Expansive Displays
featuring Inspiration for Every Room in Your Home!

DILLMAN & UPTON

A MANS FAMILY COMPANY

607 Woodward Street | Rochester | 248.651.9411
dillmanupton.com

CK Diggs
Restaurant & Bar



OPEN FOR LUNCH & DINNER

41 DRAFT BEERS
A VARIETY OF LOCAL MICHIGAN BREWS ALWAYS AVAILABLE

NW CORNER OF CROOKS & AUBURN ROAD
ROCHESTER HILLS / 248.853.6600 / CKDIGGS.COM

LYNN OATES

MORTGAGE LOAN OFFICER | NMLS # 1495433
(248) 875-1029

loates@topflitefinancial.com
topflitefinancial.com/loates



LOVE YOUR MORTGAGE EXPERIENCE!



Corporate NMLS # 4181
www.nmlsconsumeraccess.org

LCP GRAB BARS

GRAB BAR INSTALLATION

BATHROOMS • HALLWAYS • GARAGES • STEPS

Safety Within Your Reach!



CALL ONE OF OUR
REPRESENTATIVES TODAY!

586-945-9126

•

248-579-3716

•

810-858-8124

Just one call, we do it all!

2023-2024 DIRECTOR'S CIRCLE
Major Donors of Meadow Brook Theatre

\$25,000+

*The Fred A. & Barbara M. Erb Foundation
Michigan Arts and Culture Council
The Shubert Foundation*

\$10,000+

*JoAnne E. & Arden T. McClure
Ken & Peggy Philippi
Meadow Brook Theatre Guild*

\$5,000+

*Tim & Mary Caughlin
Generous Patron
Daniel & Kathy Moore*

\$2,500+

*Floy & Lee Barthel
Ray & Michelle Butters-
In Loving Memory of Bill Zandi
Thomas & Maryann Foxlee
Mary Sloan & Jeff Lichty*

*Cheryl & Larry Marshall
MSU Federal Credit Union
Anita & John Savio
Ramona & Christoph Winarski*

\$1,000 ~ \$2,499

*AMI Automated Media Inc.
DeAnna André-
In Memory of Alberta Bodeen
Community Foundation
of Greater Rochester
The Barry Bashur Foundation-
In Memory of Peggy Bashur
Tim & Mary Caughlin
James & Elizabeth Christopher
Rick & Melinda Conway-Callahan-
In Memory of Corinne Opitck
Marjory W. Epstein
Jerry & Kitty Gentile
Gregory Heleski*

*Gordon L. Hollander
Tyrick Wiltz Jones
Terence Kilburn
Jaclyn Labarbera
Michele Olind
Dr Masud Imran & Dr Farida Shibli
Lincoln of Troy
Meadowbrook Insurance Agency
Michele Olind
David & Julie Peven
Kathryn & Vincent Scanio
Diane Stumpf
Franklin & Barbara Wloch*

\$500 ~ \$999

*Anonymous
Sandra & James Bade
Mary Ann & Walter Boguslaw
Richard & Janice Caloia
Julie Granthen
John Hile
Kurt & Julia Hillebrand
Richard & Carol Johnson
Bill & Connie Jordan*

*John & Kristen LaMacchia
Michael & Christine Nykiel
Kim Ostin
Robert & Beverly Pears
Doug & Shelia Selke
Charlotte Singewald
Victor & Sue Ellen Walter
Harold & Myra Weiss*

\$200 ~ \$499

Actor's Equity Foundation
Lynn & Douglas Allen
Paul & Louise Borucki
Robert & Shirley Cafmeyer
Richard Carlson
James Chernenko
Dave & Mary Cottrell
Jean Craig Flynn
Nancy Derby
Jack & Jane Flaharty
Lisa Foster
Mimi & Frank Glasgow
Mark Guthrie
Jay & Carol Herbst
Victor & Marie Horne
Donald Ketai

Adam Kollin
Arnold Kollin
Jerry & Ellen Kott
George & Jan Kozloff
Tom Lasorda
Laurence & Kathleen Leniczek
Mary Magyari
Rick & Kris McClenthen
Penelope McPhee
Ron & Theresa Meegan
Robert Miller
Karen & Dave Motzny
Patrick & Janice Palmer
Andrea & Richard Parker
Rev. Rich & Jan Peacock-
In Honor of
Jennifer Fry

Mike Phillips
Georgiana Pietrzak
Shelia & Jim Scovic
Christa Siegel
Glen & Colleen Steyer
Bill Stockard & Beverly
Bryan
Larry & Barbara Stringer
Michael Tomkins
Peter & Irene Townsend
Westphal Family
Anthony & Joanne
Wisniewski
Dave & Joanne Wood
William & Linda Wood
Norman Zauel

\$100 ~ \$199

Marilyn & Ellwyn Albee
Beverly Alfes
Orlin Allen
Denise Allen
Bea Anderson
Chris Auger
Robert & Patricia Bartoy
Dennis & Deborah Basierbe
Charles Baxter
Richard Beaubien
Virginia Bennett
Jane Bentham
Dikka Berven
Trish Beyreis
Julie & Al Booth
Camille & Donald Breen
Teri Brisse
Kim Bryson
Jerry Brzezinski
Harley Buchanan
Evelyn Butler
Tom & Shirley Butler
Cheri Byars
Dawn Campbell
Debra & Louis Campbell
Barbara Sue Carlson
Sharon Chicklas
William & Teresa Chomic
Timothy Coolbaugh
Ellen & Bill Couch
Gretchen Cousino
Jean Craig Flynn
Donna & Craig Crawford
Marilyn Creelman
Jeanine & Michael Daly
Susan Davison
Mary & Ronald Deneweth
Thomas Denhof
Judith Moon-Desoff & Michael
Desoff
C Joseph Doerr
Phil & Althea Doolittle
Cheryl & John Doudna
Joseph & Julie Douse-Angileri
Paula Duffy

Richard Elsholz
LuAnn Eriksen
Virginia Farrug
Wilma Fellman
Paul Ferman
Steven Ferrucci
Charles & Eileen Fisher
Kenton Flatau
Michael Fligstein
Linda Forrer
John Foster
Tony & Patty Garcia-
In Memory of
Jack V. Garcia
Dawn Geisert
Patricia & James Geroux
Gregory Gillham
George & Margaret Glinke
Paul & Barbara Goodman
Arnold Gray
Jill Greimel
Joseph & Sandra Gribbin
Pamela Griffin
Mark Guthrie &
Marna Nemon
MJ Guznack
Anthony Haga
Evelyn Hawes
Marilyn Hayden
Robert & Linda Hayes
Bruce Henderson
Regina Himmelspach
Catherine Hypes
Monica & Marcello
Iannucci
Judy Jacobs
Barbara & Jack Jagoe
Denise Marie Jarfas
Jeffery & Earlene Jeffery
Joseph Jenosky
Philip & Dawn Jeszke
Carolyn Jones
John Kane
Bonnie & David Kennedy
Keith & Marlana Ketelhut

Carol Kiger
Rebecca Konkel
John & Mildred Krnacik
William & Judith E. Kulchar
Marjorie Kumar
William & Joette Kunse
Gene & Birdie Kutcher
Robin Laird
Connie Landgraff
Martin & Carol Lauer
Carol Lechtzin
Nancy Lee
John Lucas
Michael & Carol Lukity
Rae L. Mandel
Frida Markle
Richard Marsh
John Martin
William McGinty
Lynn Mclean
Ron & Theresa Meegan
Rosemary Meyecic
Louis Miller
James & Joyce Montante
Audrey Moon
Paul & Pamela Mooradian
Mark Munger
James & Catherine Murphy
Richard & Ann Oke
Cynthia Omans
Manuel & Norma Orona
Dave & Suellen Parkes
David & Barbara Peckham
Martha Preston
Kenneth & Patricia Quint
Cheryl & Kevin Riley-Doucet
Kaye Rittinger
Edward & Kathleen Robbins
Robin Ryan
Reynold Sagert
Karen Sappington
Nicole Savarino
Thomas Sawyer
Eleanor Saxon
Jennifer Dale Schreiner

Victoria & Robert Schuler
Mr. & Mrs. Kenneth
Schultz
David & Ann Schweiger
Frank & Claudia Seymour
Debbie Sharer
Laura Shelton
James & Judy Shipley
Susan & Paul Sirgany
Mary Sloan
Joann Snethkamp
Otto Soltes
Michele Spear
Brock Stallions
Philip & Kathrine Steel
James & Evelyn Steimel
James & Jean Stock
Noyce Strait
Sharon Swol
Gerald Tepatti
Craig Thomson
Roger & Barbara Timm
Julie Tonnietto
John & Lenore Treba
Daniel Treppa
Todd & Mary Vest
Robert & Beverly Walters
Carol Ward
Paulette Width
Scott & Kathryn Wilkins
Linda & Paul Willen
Andrew & Mary Wilson
Robert Wollard
David & Mary Wood
Tom & Colleen Wreesman
Jocelyne Yanez
Howard Young
Geri Zandi

Gift In Kind

313 Presents
A&A Liquor
Avon Players
Bahama Breeze
Bakehouse 46
Bavarian Inn Lodge
Boulder Pointe Golf
Brian Kessler
Busch's
Cheryl Marshall
CK Diggs
Classic Lanes Bowling
Clean Eatz
Cold Stone Creamery
Cooper's Hawk
Detroit Historical Society
The Dossin Museum
The Detroit Pistons
The Detroit Red Wings
Detroit Repertory Theatre
The Detroit Tigers, Inc.
The Detroit Zoo
The Dinner Detective
DoubleTree Hilton
El Fagon Authentic Mexican Grill
Elaine Larsen
Finnegan's Pub

The Flint Institute of Art
Fogo De Chao
Front Door Med Spa
Gordon's Food Service
Grand Tavern
Granite City
Green Leaf Salon and Spa
Griffin Claw Brewing Co.
Guido's Premium Pizza
Heirloom Hospitality
Henriquez BBQ
Jacqueline Racchi
Jimmy Johns Field
Julia Granthen
Judy Bonner
Kona Grill
Kruise & Muer On Main
The Lash Lounge
Lelli's
Leo's Coney Island
LisaMarie Gabriele
Lowe's Store #684
Lucky's Steakhouse
The M-Den
Meadow Brook Hall
Meadow Brook Theatre Board
Meadow Brook Theatre Guild
Michigan Renaissance Festival

Mr. C's Car Wash
Nino's Italian House
Nothing Bundt Cakes
Oakland University -
School of Music, Theatre, & Dance
Oakland University Golf Course
Oakland University Sports Center
Ocean Prime
Outdoor Adventure Center
Paul and Judy Anders
Pewabic Pottery
Port Huron Museum
Purple Rose Theatre
Red Lobster
Robert and Colleen Brnabic
Robin Ryan
Ron Norkiewicz
Royal Park Hotel
Seasons 52
Sedona
Skate World of Troy
Somerset Inn
Stoney River Steakhouse + Grill
Thom and Maryann Foxlee
Werner's Hallmark
The Williams Family
Yard House

*Names on this list reflect donors and contributions as of September 15th, 2023.
Every effort has been made to ensure complete and accurate lists.
Please notify the Box Office with corrections.*

IMPORTANT INFORMATION FOR OUR PATRONS

More and more of our patrons are being exploited by UNSCRUPULOUS TICKET RESELLERS.

Oftentimes our tickets are being marketed on secondary ticket sites and being sold at prices far above the price you will pay by purchasing your tickets through Meadow Brook Theatre.

If you purchase tickets from another source, you might pay too much for your tickets or may even pay for *invalid* tickets. You also may not be able to get help from Meadow Brook Theatre's ticketing staff if you have a problem; there will be no in-house record of your transaction and we cannot contact you if there is a change of performance time, traffic notices, or to provide any other special information.

TO AVOID BEING ENSNARED BY TICKET RESELLERS:

- Bookmark our website www.MBTheatre.com for ticket and show info
- Sign up for our eNewsletter to receive information directly from MBT

We urge you to PROTECT YOURSELF by purchasing directly from the official authorized source for Meadow Brook Theatre tickets.

Buy your tickets by phone at 248-377-3300, or at the Meadow Brook Theatre Box Office.

Or buy through Ticketmaster at Ticketmaster.com or 800-745-3000.

WEEKLY RENT ANGELS

KEN LUDWIG'S MORIARTY

Week One

Ken & Peggy Philippi

Week Two

Ken & Peggy Philippi

Week Three

Ken & Peggy Philippi

Week Four

Ken & Peggy Philippi

A CHRISTMAS CAROL

Week One

Terrence Killburn

Week Two

MBT Retirees

Week Three

Mary Sloan & Jeff Lichty

Week Four

Anonymous

Week Five

Available

Week Six

Available

FATHER OF THE BRIDE

Week One

JoAnne E & Arden T McClure

Week Two

JoAnne E & Arden T McClure

Week Three

JoAnne E & Arden T McClure

Week Four

JoAnne E & Arden T McClure

.....

Want to be an Angel?

Become a part of Meadow Brook Theatre's season of Broadway-quality performances by becoming a Rent Angel.

Rent Angels receive special recognition throughout the season and complimentary tickets to the theatre.

A LITTLE MORE ALIVE

Week One

A Generous Donor

Week Two

A Generous Donor

Week Three

Available

Week Four

Available

NATIVE GARDENS

Week One

Ramona & Christoph Winarski

Week Two

Available

Week Three

*Ray & Michelle Butters-
In Loving Memory of Bill Zandi*

Week Four

Available

ROUTE 66

Week One

Dan & Kathy Moore

Week Two

Dan & Kathy Moore

Week Three

Available

Week Four

Available

ELLA, FIRST LADY OF SONG

Week One

Mary & Tim Caughlin

Week Two

Available

Week Three

Available

Week Four

Available

*For more information and sponsorship amounts:
(248) 370-3316 or groupsales.mbt@gmail.com*



MEET NAJAE'

- *Nursing program senior*
- *Diane Norris Endowed Nursing Scholarship recipient*

Nursing student **NAJAE' RATCLIFF** wanted compassion at the core of her career, and found that curriculum and community in Oakland University's School of Nursing. In the final stages before graduation, her education has transformed her lifelong dream of becoming a labor and delivery nurse into her eventual profession and has built confidence and knowledge to thrive in her field.

Find your purpose at **OAKLAND UNIVERSITY.**
oakland.edu





COMING SOON

The legendary Freda Payne will be reprising her role as Ella Fitzgerald in *Ella, First Lady of Song* at Meadow Brook Theatre!

May 29 - June 23, 2024

Tickets available at [ticketmaster.com](https://www.ticketmaster.com) or call the Box Office at (248) 377-3300.

Detroit Native, Freda Payne became an established Jazz and R&B singer in the mid 1960s. Yielding a string of smash hits for Motown such as "Band of Gold," "Deeper and Deeper," and "Bring the Boys Home." Payne made several musical appearances on television programs hosted by Ed Sullivan, Johnny Carson, David Frost, and Merv Griffin.

During the past two decades, Payne has turned her talents to acting and has appeared on stages across the United States. She has starred in such theatrical productions as *Ain't Misbehavin'*, *Sophisticated Ladies*, and *Blues in the Night*. She will be reprising the role of Ella Fitzgerald in *Ella, First Lady of Song*, at Meadow Brook Theatre this spring!

Win a Trip to **Boston**

\$5
for 1 ticket

\$15
for 15 tickets

Buy a Raffle Ticket in the lobby for a chance to win a trip for 2 to Boston, MA!

BOARD OF DIRECTORS

Mr. Thom F. Foxlee / *President*

Mr. John Savio / *Vice President*

Mr. Jeff Wurges / *Secretary*

Mr. David Kata / *Treasurer*

Mrs. Melinda Conway-Callahan

Ms. Elaine K. Carey

Mrs. Mary Caughlin

Mr. Dan Goggin

Mr. Tyrick Wiltez Jones

Ms. Mallory A. Kallabat

Ms. Angela G. King

Mr. Stephen W. Mackey

Mr. Donald O'Dowd

Mrs. Kimberly Palter

Mrs. Robin Ryan

In Loving Memory

Mrs. Maggie Allesee

Ms. Cindy Williams

COMMUNITY BOARD

Colleen Brnabic Cindy Cirar

Julie Granthen Mary Mbiya Lynn Oates

SPECIAL THANKS

Oakland University, Meadow Brook Theatre Board of Directors, Meadow Brook Theatre Guild, Jennifer Fry, Kitty Gentile, and Mary Williams

THE MEADOW BROOK THEATRE VOLUNTEER USHER GROUPS

Act II, A La Carte, On the Aisle, Troy Newcomers.

Cover Art: Chet Johnson

LET US KNOW YOUR THOUGHTS...
communications.mbt@gmail.com

FIND OUT WHAT'S HAPPENING IN MI THEATRE..
EncoreMichigan.com

Follow us on social media!

 @MBTheatre

@MeadowBrookTheatre 

 @MBTheatre

Meadow Brook Theatre 

STAFF

Managing Director / *Cheryl L. Marshall*

Artistic Director / *Travis W. Walter*

Company Manager / Stage Manager /

Britt Sicker

Choreography Consultant / *Tyrick Wiltez Jones*

Development Director / *Tina Collins*

Group Sales / Administration Assistant /

LisaMarie Gabriele

Marketing Coordinator / *Graphic Designer*

Katie Weatherly

Box Office Manager / *Sharon Harper*

Assistant Box Office Manager / *Tim Baum*

Box Office Associates / *Abby Paella,*

Melissa Gabriele

House Managers / Ushers / *Sarita Alvarado,*

Alexa Huss, DJ Jones, Tahjuanna Jones,

Reilly Kerrigan, Izzy Krzewski,

Sydney Nummer, Amanda Pordon,

Annabel Pulman, Parker Splete

Production Manager / *Brian K. Kessler*

Technical Director / *Daniel Silverman*

Head Stage Technician / *Jeremy Burzuk*

Properties Director / *Kristen Gribbin*

Costume Shop Manager / *Liz Goodall*

Costume Shop Foreman / *Mary Pettinato*

Wardrobe Supervisor / *Jade Jaarda*

Scene Shop Foreman / *Riley Stone*

Scenic Carpenters / *Isabella Harvey,*

Jordan Hayes-Devloo

Scenic Artist / *Gwen Lindsay*

Master Electrician / *Griffin Proctor*

Audio Engineer / *Mike Duncan*

Interns / *Raegan Cantrelle, Mike Danaj,*

Caridad Guy, Lillian Levine,

Jacob Lipski, Andrej Nawoj,

Kaley Norsworthy,

Devin Stevenson

House Photographer / Sean Carter Photography: *Sean Carter*

House Videographer / DR Legacy Productions: *Dave Legacy, Patty Larin Walby, Karl Walby*

MEADOW BROOK THEATRE GUILD

The Meadow Brook Theatre Guild is a volunteer group organization to support and promote community interest in Meadow Brook Theatre.

President / *Jeni Walch* Vice President / Event Advisor / *Maryann Wilshere*

Treasurer / *Speedy Bates* Recording Secretary / *Robin Richards*

Corresponding Secretary / *Jan Shotwell* Membership / Mentoring / *Kathy Warriner*

Past President / *Sue May* Parliamentarian / *Suellen Parkes* Newsletter / *Teresa Koempel*

GUILD MEMBERS

Judy Anders

Deanna André

Speedy Bates

Terri Bendes

Susan Blair

Colleen Brnabic

Marina Cantarella Russo

Jeni Carino

Mary Caughlin

Paula Choike

Kathy Ciaramitaro

Diane Corker

Paulette Cushnier

Judy Dery

Karen Elliott

Dawn Evoo-Danowski

Sandy Fick

Maryann Foxlee

Peggy Gamble

Deanna Gross

Bruna Grosse

Mary Halley

Judith Hickman

Marie Hochstein

Sue Jayroe

Marge Kaiser

Martha Kent

Teresa Koempel

Birdie Kutcher

Dorothy LaBay

Katherine Leonard

Patricia Lesich

Susan Marie Lettner

Josephine Long

Cheryl Marshall

Sue May

Theresa Meegan

Sonia Milton

Joyce Obenhoff

Suellen Parkes

Gwendolyn Ray

Doreen Raynak

Melinda Reeber

Robin Richards

Barbara Sassen

Kathy Serafino

Bernadette Setlick

Jan Shotwell

Shirley Sikov

Romayne Stapleton

Carol Stidham

Lynn Vanderbeek

Donna Vogt

Jeni Walch

Lucille Walla

Kathy Warriner

Maryann Wilshere

Judie Wurges

Denise Zuke

Since the inception of the Meadow Brook Theatre Guild in 1977, the Guild has raised just over \$1,000,000 to benefit Meadow Brook Theatre. If you would like information on joining the Meadow Brook Theatre Guild, call (248) 370-9705

ACKNOWLEDGEMENT

Meadow Brook Theatre is most appreciative of the support of the Meadow Brook Theatre Guild.

WISH LIST

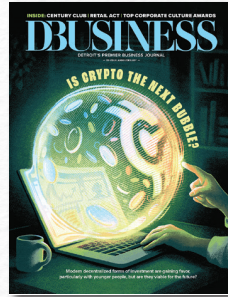
Visit MBTheatre.com/wish-list/

Donations of goods and services make a difference for Meadow Brook Theatre! By helping us reduce costs, you can help MBT contribute more resources to enhancing artistic programming.

HOUR MEDIA PROUDLY SUPPORTS MEADOW BROOK THEATRE AND ITS MISSION.



Your Lifestyle



Your Insight

YourStories | YourStyle

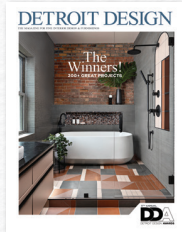
YOUR CITY MAGAZINES

HOUR

MEDIA



Your Celebration



Your Sanctuary



Your Craving



Your Wellness

TO LEARN MORE ABOUT HOUR'S EVENTS AND OUR OTHER NON-PROFIT PARTNERED OCCASIONS, PLEASE SCAN THE QR-CODE. WE LOOK FORWARD TO SEEING YOU AGAIN AND AGAIN!



AVAILABLE ON NEWSSTANDS ACROSS METRO DETROIT | FOR SUBSCRIPTIONS 866.660.MAGS
FOR ADVERTISING INFO CALL 248.691.1800 | VISIT ONLINE AT WWW.HOURDETROIT.COM